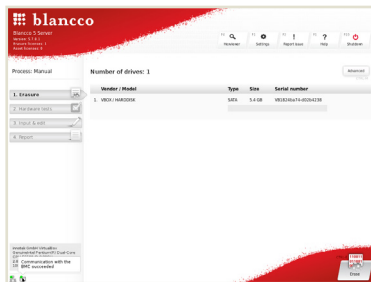


# Hosted Erase: Client Computers

## Laptop, PC and Server Erasure



### HEADER AREA ON TOP OF THE SCREEN:

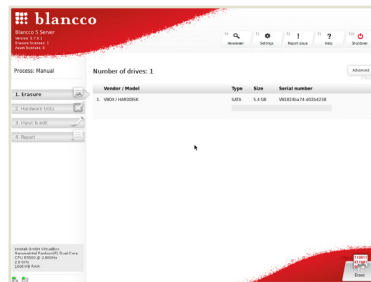
- License information, Version, Function buttons

### PROCESS AREA ON LEFT OF THE SCREEN:

- Process steps, Network and Management Console status icons

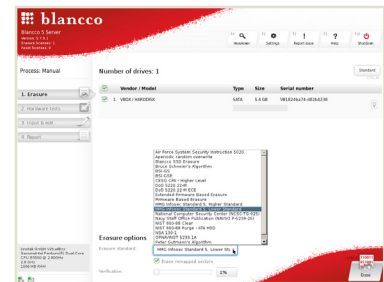
### WORK AREA IN THE MIDDLE OF THE SCREEN:

- Process step related information, advanced button for changing erasure standard



### STANDARD WORK AREA:

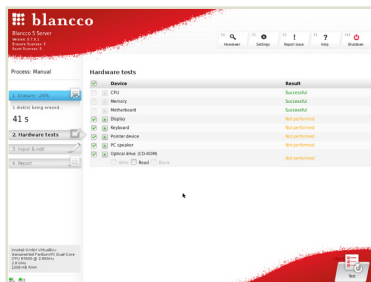
- "Erase" button starts erasure on all connected disks with pre-configured settings
- Clicking "advanced" button will change to advanced work area



### ADVANCED WORK AREA:

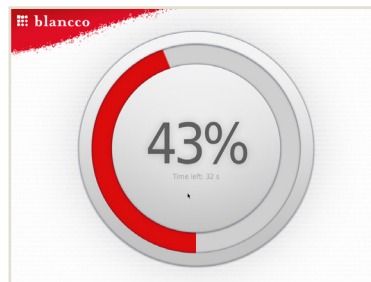
- Possibility to choose which connected disks will be erased.
- Erasure standard and verification level can be changed.
- Clicking "standard" button will change back to standard work area.

Note: Blancco SSD Erasure is used for SSD disks automatically if enabled in pre-configuration. (Feature is enabled by default in pre-configured Ontrack Hosted Erase -images).



CPU, memory and Motherboard – tests are performed automatically.

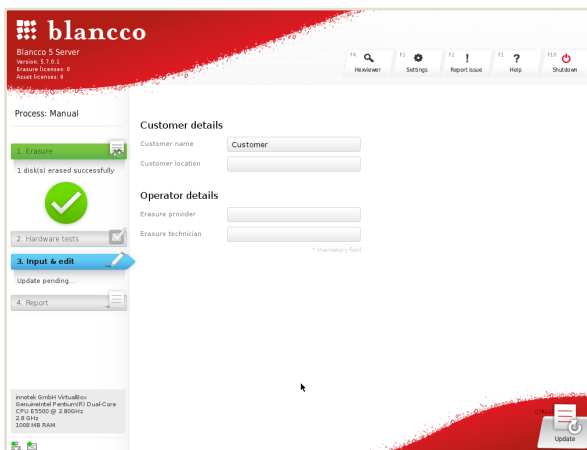
Other tests are performed by users discretion.



Erase in progress screensaver.



Erase process complete-screensaver.



Process area color codes:

**GRAY COLOR:**

- Task has not yet been initialized or is not active.

**BLUE COLOR:**

- Process or given task is running

**GREEN COLOR:**

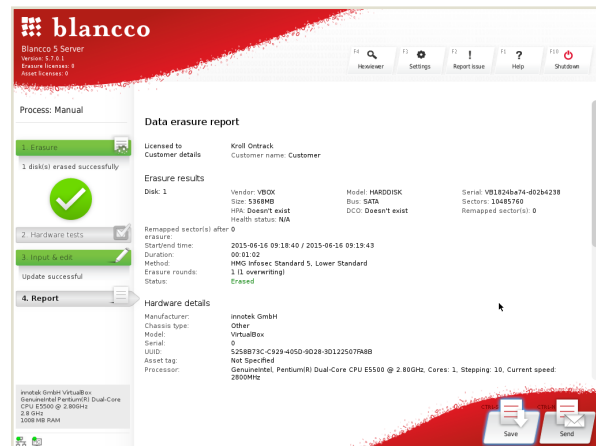
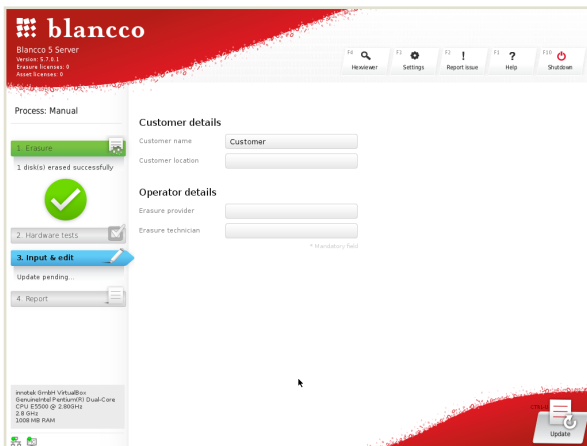
- The task has been completed successfully

**YELLOW COLOR:**

- User action is required. Drive erasure is paused etc.

**RED COLOR:**

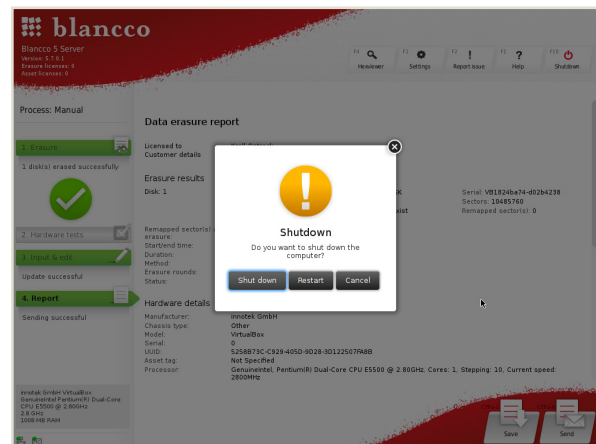
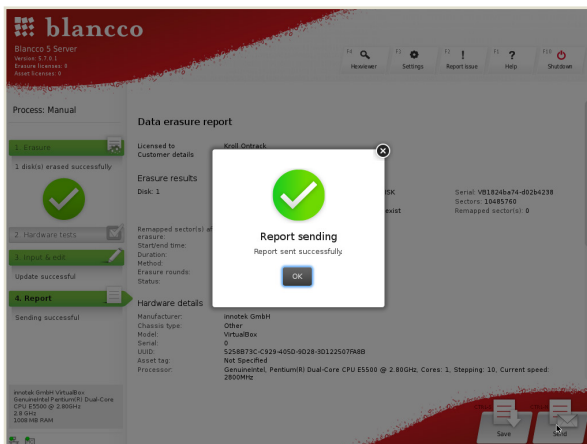
- Task has failed



Customer and Operator details can be pre-configured or changed or typed in during erasure.

**ERASURE REPORT**

- remember to save and/or send report



Erasure report sent successfully.

Shut down (or restart) after erasure.

For more information visit us online:  
[www.ibas.no](http://www.ibas.no) | [www.ibas.se](http://www.ibas.se) | [www.ibas.dk](http://www.ibas.dk) | [www.ibas.fi](http://www.ibas.fi)

